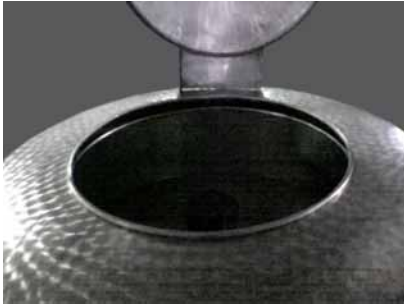


CCSDM CENTRIFUGAL SPIN DRYER MACHINE

Cetrifugal spin dry Machine for removing extra water from the garments in a very short time.

- Ergonomically designed
- Improves material quality
- With manual and magnetic disc brakes

Operated by a timer, at the end of the period, machine will stop automatically by the disc brakes.



Technical Specifications	
Drum Load Capacity	120 Kg
Drum Diameter	120 cm.
Drum Depth	45 cm.
Drum Thickness	4 mm.
Drum Speed	0 ~ 900 rpm
Overall machine height	95 cm.
Overall machine width	180 cm.
Overall machine weight	1200 Kg.
Power Consumption	11 Kw
Electrical requirement	380V AC 50Hz
Production Rate	2000 - 3000 pcs. / 8 hrs.